

1449 SW Gatlin Boulevard, Port St. Lucie, FL 34953



DESCRIPTION: Located in newly constructed, Gatlin Square, which is a 17,900 SF +/- retail, office and medical office building in the heart of Port St. Lucie. Existing tenants include Little Cesar's, Mr. Smokes, Man Cave, Tomalty Dental, and Tres Chic.

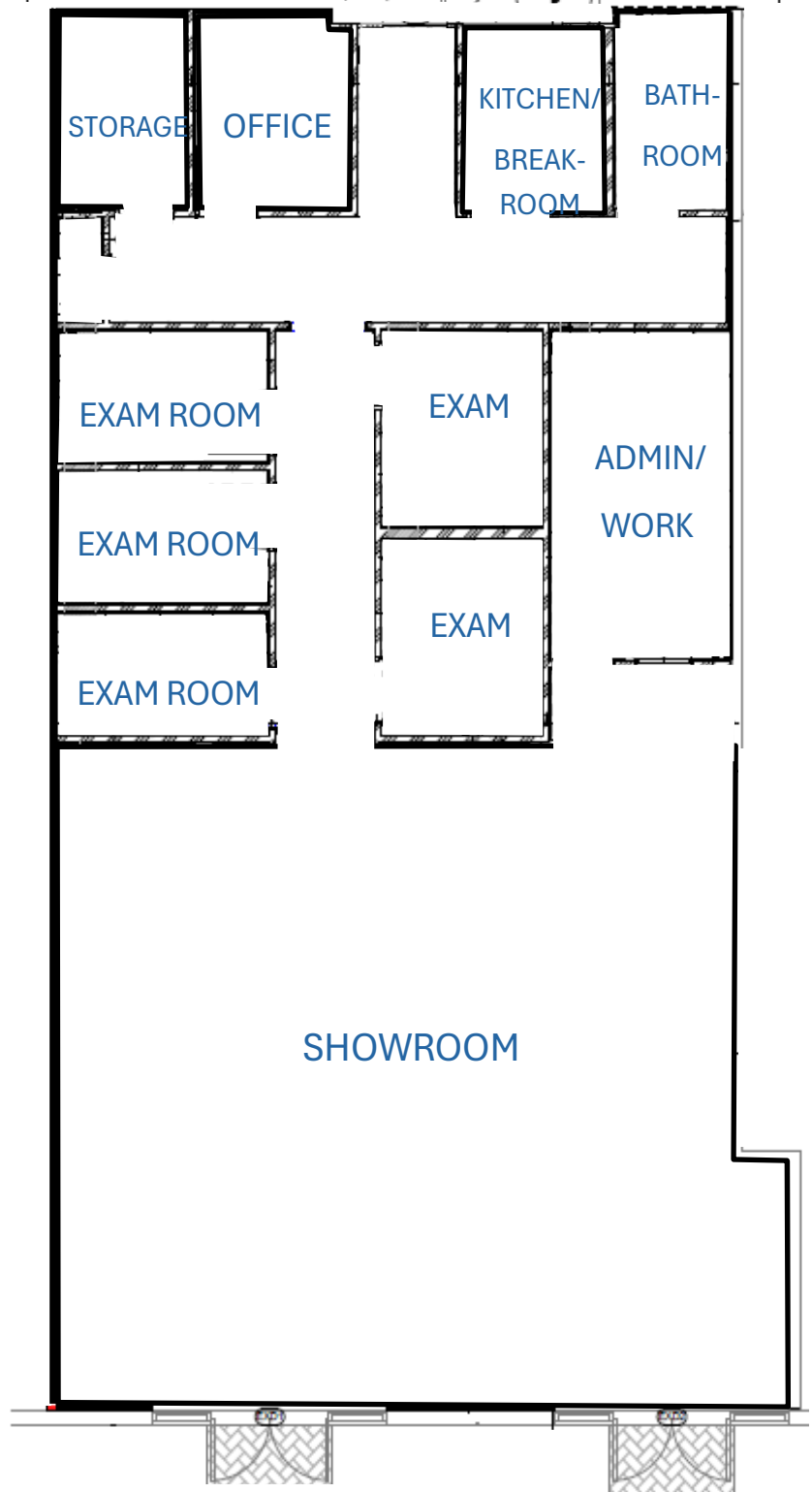
DETAILS:

- NNN—\$8.00 Net
- Call for rent rate
- Can be up and running within 60 days



SPACE DETAILS:

- 2,471 SF +/-
- 35.5 FT X 67.1 FT
- Two Entrances
- Large Showroom
- 5 Exam Rooms
- 1 Office
- Kitchen/Breakroom
- Private Bathroom
- Admin/Work Space
- Storage



Bray Realty
Advisors

NATE BRAY
ADEMIL CASTRILLO
(561) 510-2225

CALL US